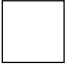
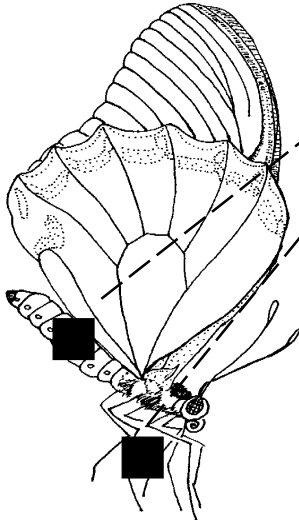


# BUTTERFLY

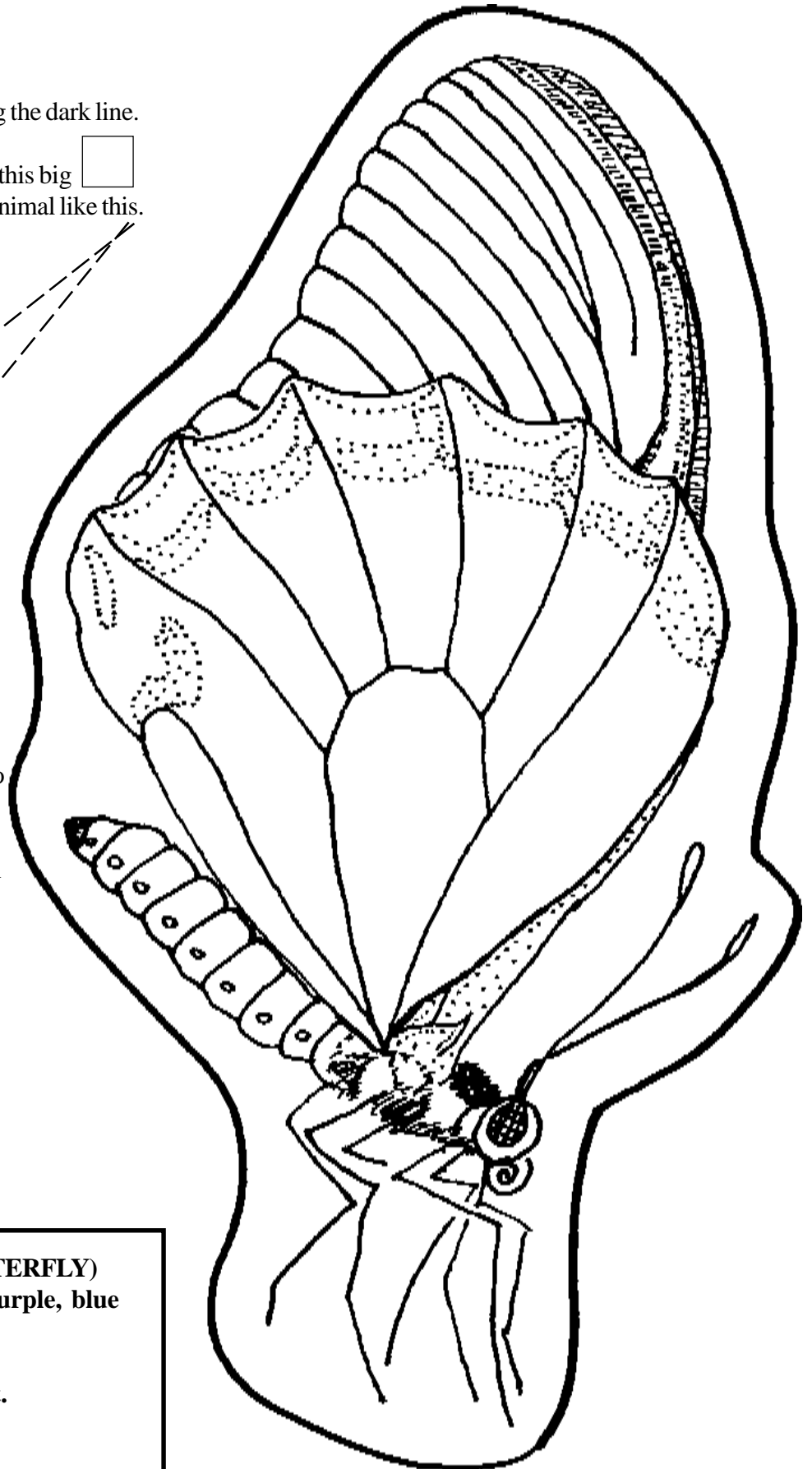
## INSTRUCTIONS

- 1) Cut out the animal pattern along the dark line.
- 2) Color the animal.
- 3) Cut two pieces of velcro about this big  and stick them to the body of the animal like this.



handle

- 4) Tape a popsicle stick or ruler to the back of the animal picture to use as a handle.
- 5) Cut out and tape the Pollination Clues to the back of the animal picture.



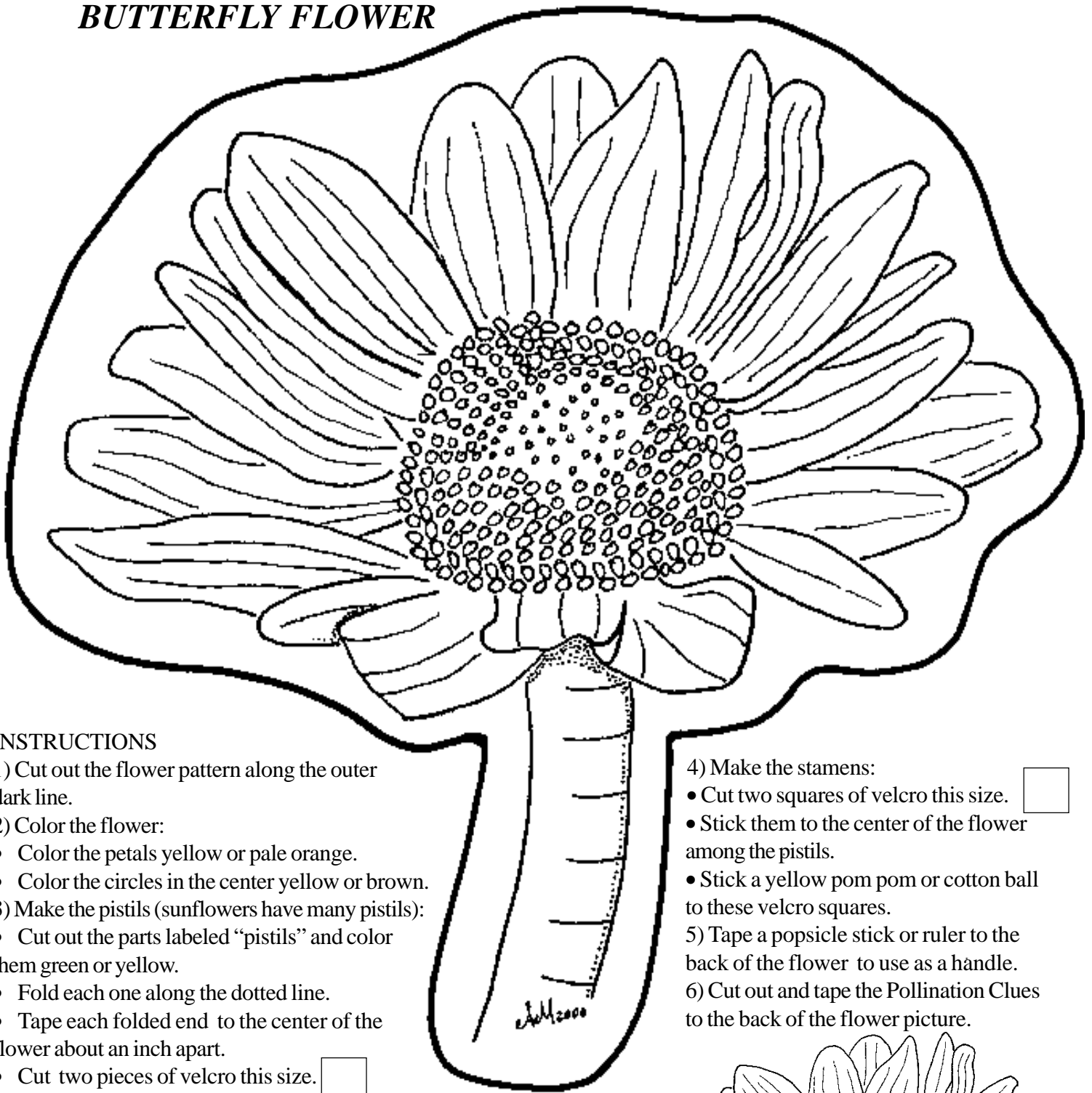
### **POLLINATION CLUES (BUTTERFLY)**

**I am attracted to pink, yellow, purple, blue or orange flowers.**

**I like flowers with a sweet scent.**

**I walk on top of flowers.**

# BUTTERFLY FLOWER



## INSTRUCTIONS

1) Cut out the flower pattern along the outer dark line.

2) Color the flower:

- Color the petals yellow or pale orange.
- Color the circles in the center yellow or brown.

3) Make the pistils (sunflowers have many pistils):

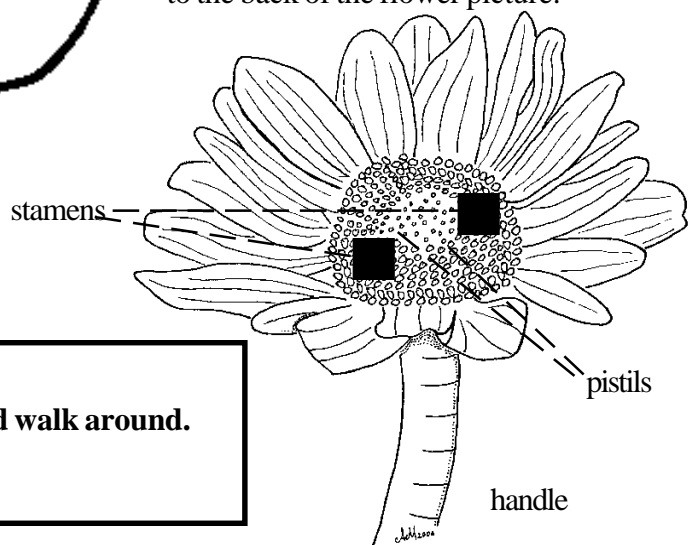
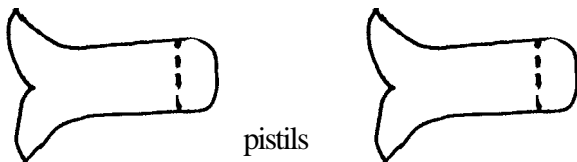
- Cut out the parts labeled "pistils" and color them green or yellow.
- Fold each one along the dotted line.
- Tape each folded end to the center of the flower about an inch apart.
- Cut two pieces of velcro this size.
- Stick one on top of each pistil.

4) Make the stamens:

- Cut two squares of velcro this size.
- Stick them to the center of the flower among the pistils.
- Stick a yellow pom pom or cotton ball to these velcro squares.

5) Tape a popsicle stick or ruler to the back of the flower to use as a handle.

6) Cut out and tape the Pollination Clues to the back of the flower picture.



**POLLINATION CLUES (BUTTERFLY FLOWER)**  
**I have a flat surface where my pollinator can land and walk around.**  
**I have a sweet scent.**