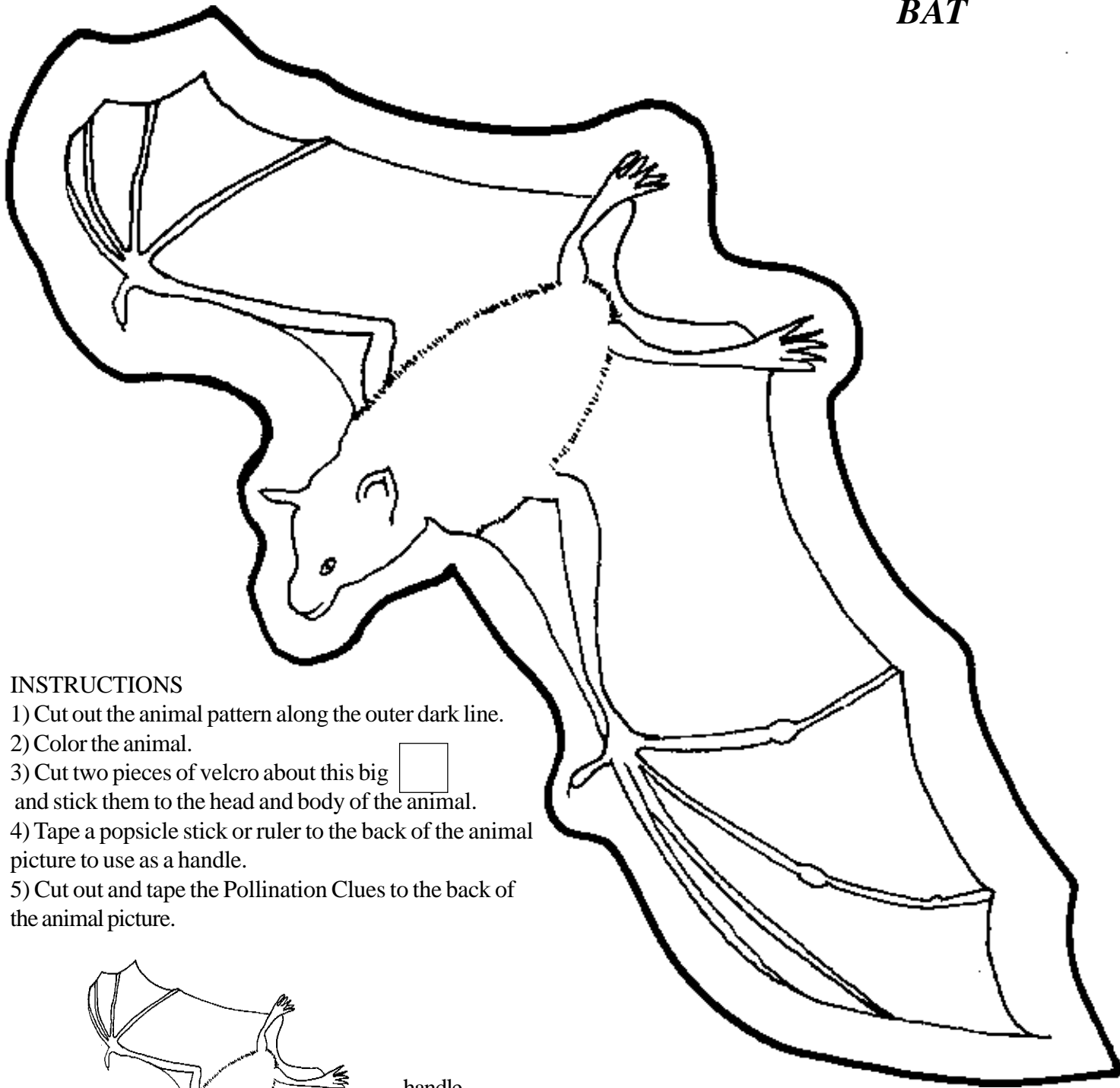

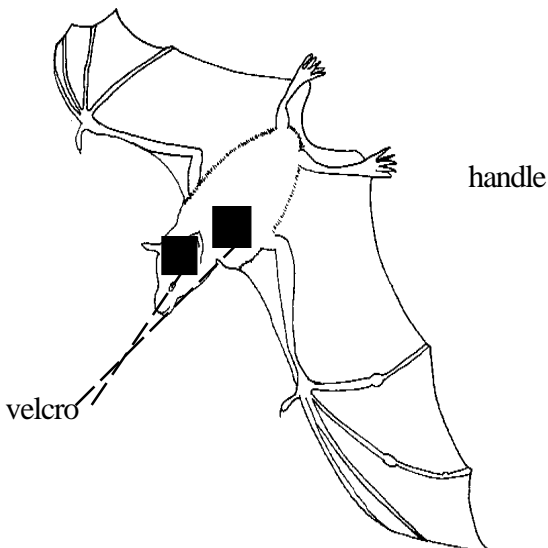


# BAT



## INSTRUCTIONS

- 1) Cut out the animal pattern along the outer dark line.
- 2) Color the animal.
- 3) Cut two pieces of velcro about this big  and stick them to the head and body of the animal.
- 4) Tape a popsicle stick or ruler to the back of the animal picture to use as a handle.
- 5) Cut out and tape the Pollination Clues to the back of the animal picture.



### POLLINATION CLUES (BAT)

**I am attracted to white or pale green flowers that open at night.**

**The flowers I am attracted to are high off the ground.**

**I have a strong sense of smell.**

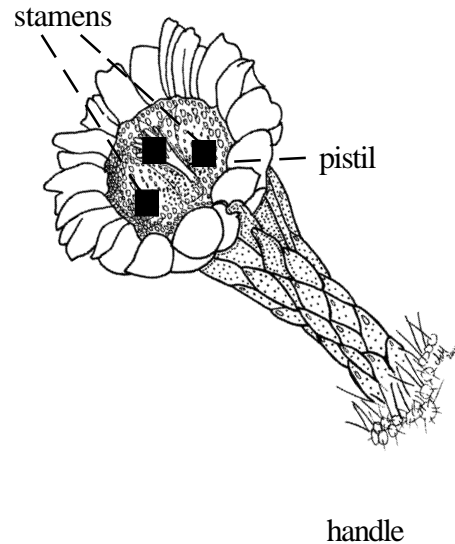
# BAT FLOWER

## INSTRUCTIONS

- 1) Cut out the flower pattern along the outer dark line.
- 2) Color the flower:
  - Color the sepals green.
  - Leave the petals white.
  - Color the center of the flower yellow.
- 3) Make the pistil:
  - Cut out the part labeled “pistil” and color it green or yellow.
  - Fold it along the dotted line.
  - Tape the folded side onto the pistil in the drawing.
  - Cut a square of velcro this size.
  - Stick it to the top of the pistil.

pistil

- 4) Make the stamens:
  - Cut one pipe cleaner in four equal pieces.
  - Fold over the tip on each piece.
  - Cut two squares of velcro this size.
  - Stick them to the folded tips on two of the pipe cleaners.
  - Stick the pipe cleaners through the flower around the pistil.
  - Stick a yellow pom pom or cotton ball to the velcro squares.
  - Tape the ends of the pipe cleaners to the back of the flower.
- 5) Tape a popsicle stick or ruler to the back of the flower stem to use as a handle.
- 6) Cut out and tape the Pollination Clues to the back of the flower picture.



### POLLINATION CLUES (BAT FLOWER)

**I bloom at night.**

**I have a strong, sweet, musky  
scent.**